

# J3 Series Singles

**ADR  
Approved**  
**100%  
Waterproof**  
**5 Year  
Warranty**

- Individually Mountable with Bracket
- ADR Australian Road Approved
- Inbuilt Reflex Reflector
- IP67 Rated
- Voltage Range 12-24 Volt
- 5 Year Warranty

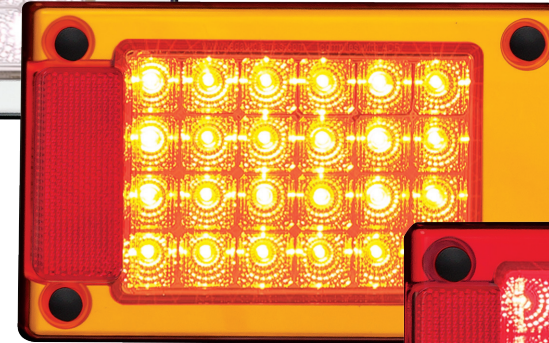
<b>Function</b>	(Stop/Tail)/Indicator/Reverse/Reflector
<b>Size</b>	190mm x 122mm x 30mm
<b>Voltage</b>	Multivolt 12-24V
<b>LED Qty</b>	24
<b>Cable</b>	10cm cable
<b>Lens</b>	PMMA
<b>Bracket</b>	ABS

<b>Draw</b>	<b>Stop</b>	<b>Tail</b>	<b>Ind</b>	<b>Rev</b>
@13.8V	0.47A	0.04A	0.42A	0.18A
@28V	0.27A	0.03A	0.28A	0.11A

Approvals	Function	Category	CRN
ADR	Stop/Tail	49/00	42965
ADR	Indicator	6/00 2a	42964
ADR	Reverse	1/00	42967
ADR	Reflector	47/00	42966
CTA	Stop/Tail/Ref	49/00, 47/00	CTA-042964
CTA	Indicator/Ref	6/00 2a, 47/00	CTA-042964
CTA	Reverse/Ref	1/00, 47/00	CTA-042964



Reverse Lamp  
**J3WM** - Includes Bracket, Blister  
**J3WMB** - Lamp Only, Bulk



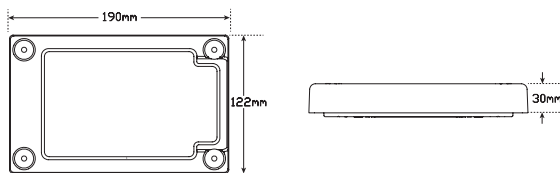
Rear Indicator Lamp  
**J3AM** - Includes Bracket, Blister  
**J3AMB** - Lamp Only, Bulk



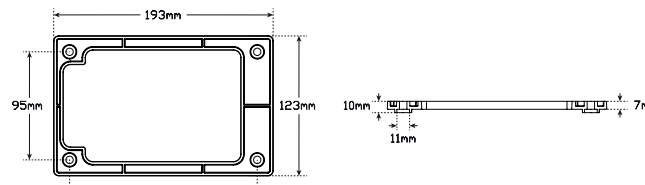
Stop/Tail Lamp  
**J3RM** - Includes Bracket, Blister  
**J3RMB** - Lamp Only, Bulk



Part No. J3B1B



Lamp



Bracket

## Fitting Instructions

Surface mount onto flat surface horizontally with bracket and run cable through hole in mounting surface. Please refer to ADR 13/00. Can also be used as a replacement lamp for the J2/J3 series lamps



All enquiries P: (03) 9466 7075 E: [led@ledtech.com.au](mailto:led@ledtech.com.au), [www.ledautolamps.com](http://www.ledautolamps.com)

All efforts are made to ensure all information is correct and up to date, it can be subject to change without notice. All measurements are in millimeters (mm) and are not to scale.

© All LED Technologies designs are registered throughout the world. - Current as of 22/09/2020